



LATERAL DETECTIVE

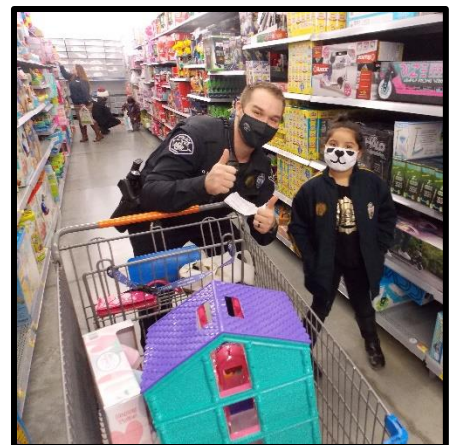
\$94,020 - \$98,724

Plus 4% incentive pay and excellent benefits

APPLY TODAY!

www.monroewa.gov/574

360-794-6300



THE CITY OF MONROE

Monroe is a lively and active community of 20,000 residents located on the Skykomish River at the foothills of the Cascade Mountains just 30 minutes northeast of Seattle and 15 minutes southeast of Everett and the I-5 corridor. The city is shifting from a small rural community into a diverse, inclusive, and thriving city of regional significance. Residents benefit from quality schools, top-notch parks, and quick access to urban amenities and outdoor activities. Monroe has a vibrant Hispanic community, historic business district, and a strong regional retail and commercial industry serving more than 45,000 people in southeast Snohomish County.



The City of Monroe operates under the Strong Mayor form of government. The mayor is elected by the citizens of Monroe to head the administrative branch of city government. The mayor directs all city operations, projects, and programs and administers all policies and laws adopted by the seven-member City Council.

THE DEPARTMENT & POSITION

The Monroe Police Department strives to be an organization of value-oriented people reflective of our diversity, dedicated to serving the community with integrity, honor, and fairness that all may know justice, equality, and freedom under the law. Employees of the police department are committed to the principles of duty, integrity, compassion, and professional growth. We recognize the value of the tenets of: **Professionalism, Respect, Integrity, Dedication, and Excellence.** These values have been established through a collaborative effort among all personnel of this agency and are applied within the Monroe Police Department's mission.

The person selected for this position will report to the Criminal Investigations Division Sergeant. The unit is separated into persons and property crime investigations, though this position will be tasked with persons crimes investigations. When fully staffed, the CID team consists of a Sergeant, four Detectives and one Investigative Support position. The Lateral Detective chosen will not be subject to routine rotation to patrol operations.

MINIMUM REQUIREMENTS:

- 3 Years Investigative Experience
- High school graduate or GED
- Completion of the Washington State Criminal Justice Training Commission Basic Training Academy or approved basic training equivalency program (see WAC 139-05-210)
- A minimum of 24 months of the last 36 months of full-time paid service as a sworn police officer in a civilian governmental jurisdiction
- All out of state applicants must complete the Washington State Criminal Justice Training Commission Equivalency Academy within 1 year of taking employment with the City of Monroe.

SALARY & BENEFITS:

- Salary Range Step D: \$94,020 – Step E: \$98,724 (DOE) plus 4% specialty pay
- Educational Pay; (2.5%) AA Degree, (5%) Bachelors, (7%) Masters
- Longevity pay
- Multiple other specialty opportunities providing up to 3% increase in pay
- On-duty workout time
- Deferred Comp program with 3% city match
- Medical, dental, and vision insurance for employee and qualified dependents
- Vacation, sick leave, and retirement plan; Vacation accrual commensurate to years of service.
- All required equipment and uniforms provided initially; then replaced as needed
- Spanish speaking incentive pay
- 4x10 schedule
- Take home vehicle
- Rotating compensated on-call compensation



The City of Monroe is an Equal Opportunity Employer and does not discriminate in hiring on the basis of race, creed, color, religion, sex, age, national origin, marital status, sexual orientation, citizenship status, disability or veteran status.